

## The role of epigenetics in endometrial cancer

Dominik Kodada<sup>1</sup>, Nikola Nyarivova<sup>1</sup>, Gabriel Minarik<sup>2</sup>, Vanda Repiska<sup>1</sup>

<sup>1</sup>Comenius University in Bratislava Faculty of Medicine, Department of clinical biology, genetics and clinical genetics, Bratislava

<sup>2</sup>MEDIREX GROUP ACADEMY n. o., Nitra

Endometrial adenocarcinoma, often referred as the endometrial cancer, is the most common kind of uterine cancer. It's incidence is rising in last decades and each year tens of thousands of women worldwide are diagnosed with one of two types of endometrial cancer. It is observed that relatively higher incidence is in the developed world countries, in North America and central Europe. These unfortunate statistics are also an opportunity for these regions to study its forming process and possible ways how this malignancy emerges on the cellular level. As it is with such multifactorial diseases, it undergoes a complex development during which affected cells undergo many changes in their genetic information as well as in their epigenetic modifications. Not all of them should be considered the oncological drivers, but passengers of the rapid changes in adenocarcinoma tissues may also affect its staging. Therefore, the studies of the mutations, DNA epimutations, changes in histone code or micro-RNA molecules and disturbed hormone signalling pathways may be crucial for understanding of carcinogenesis process. The passengers with significant correlation rates, even though they are not crucial for potential therapy, may have their role in the development of new diagnostic tools. In this article, we provide a review of epigenetic changes affecting endometrial cancer types.

**Keywords:** Endometrial cancer development, epigenetics, type 2 endometrial cancer, DNA methylation, OncomiRs

### Úloha epigenetiky pri rakovine endometria

Endometriálny adenokarcinóm, uvádzaný často aj ako rakovina endometria, je najčastejším druhom rakoviny maternice. V posledných desaťročiach možno sledovať nárast jeho výskytu a každoročne sú desiatitisíce žien na celom svete diagnostikované jedným z dvoch typov rakoviny endometria. Známe je, že relatívne vyšší výskyt pozorujeme vo vyspelých krajinách sveta, najmä v štátoch Severnej Ameriky a strednej Európy. Táto nepríjemná štatistika je však tiež možnou príležitosťou pre tieto regióny študovať karcinogézu a možné spôsoby, aké sú príčiny a dôsledky tejto malignity na bunkovej úrovni. Ako to býva pri multifaktoriálnych ochoreniach, postihnuté bunky prechádzajú nielen mnohými zmenami genetickej informácie, ale aj epigenetickými modifikáciami. Nie všetky by sa mali považovať za kritické pre onkologický proces, no aj sprievodné modifikácie v tkanivách adenokarcinómu môžu ovplyvniť vývoj malignity. Preto môže byť štúdium mutácií, epigenetických zmien v DNA, zmien v histónovom kóde alebo molekulách mikroRNA, prípadne narušených hormonálnych signálnych dráhach kľúčové pre pochopenie procesu karcinogézy. Sprievodné zmeny s významnou mierou korelácie, aj keď nie sú rozhodujúce pre potenciálnu terapiu, môžu mať svoju úlohu pri vývoji nových klinicky relevantných nástrojov. V tomto článku podávame prehľad epigenetických zmien ovplyvňujúcich oba typy rakoviny endometria.

**Kľúčové slová:** karcinogéza rakoviny endometria, epigenetika, rakovina endometria 2. typu, DNA metylácia, OncomiRs

NewsLab, 2022; roč. 13 (1): 26 – 30

### Introduction

Endometrial cancer (EC) is the second most common gynecologic cancer (after breast cancer) and seventh most common cancer worldwide among females<sup>(1,2)</sup>. Regions of Central and eastern Europe had the second highest cumulative risk in both incidence (2,48%) and mortality (0,47%) in 2020. In estimated age-standardized incidence rates of all ages, Slovakia is ranked 15<sup>th</sup> of all countries (Table 1)<sup>(2)</sup>.

The full mechanisms of EC development remain unclear but there is growing number of molecules (hormones, proteins and RNAs) reported to have a role in carcinogenic process. Mutations in coding regions of functional molecules same as their regulation is crucial for EC development. In last

decades, the research is getting more focused on epigenetic changes, such as hypermethylation, deacetylation of histones or RNA interference<sup>(1,3,4)</sup>. The epigenetic modifications seems to be more frequent in EC than genetic changes, therefore they could potentially serve as a diagnostic tool<sup>(4)</sup>.

### Types of endometrial cancer and their differences

There are two types of EC differing in the body estrogen excess and the rate of spreading. Type 1 is more common (80% of cases), growing slower and linked to excess of estrogen. It occurs mostly among premenopausal and perimenopausal women. Type 2, on the other hand, is faster growing one, without apparent multistage pro-

**Table 1.** The list of countries with highest rate of endometrial cancer in 2020. Both age-standardized rates cumulative risk were estimated for all ages<sup>(28)</sup>.

Rank	Country	Age-standardized incidence (per 100 000)	Cumulative risk (%)
1.	Poland	26.2	4.57
2.	Lithuania	25.4	4.41
3.	Samoa	24.7	3.42
4.	Belarus	23.6	3.59
5.	Jamaica	22.3	5.43
6.	Ukraine	22.1	3.38
7.	North Macedonia	21.8	3.22
8.	Bahamas	21.8	5.55
9.	United States of America	21.4	3.74
10.	Trinidad and Tobago	20.5	4.19
11.	Barbados	20.4	4.38
12.	Cuba	20.1	3.98
13.	Ireland	20.0	3.80
14.	Russian Federation	19.7	3.26
15.	Slovakia	19.7	3.69
16.	Slovenia	19.6	3.82
17.	Greece	19.2	3.34
18.	Canada	18.6	3.32
19.	Bulgaria	18.3	3.08
20.	Czechia	18.0	3.65
21.	Serbia	17.9	3.04
22.	New Zealand	17.7	3.05
23.	Latvia	17.6	3.10
24.	Croatia	16.8	3.16
25.	United Kingdom	16.7	3.42
26.	Singapore	16.4	2.49
27.	Norway	16.0	3.53
28.	Hungary	15.5	2.96
29.	Estonia	15.4	2.86
30.	Malta	15.2	3.32

cess. It is not linked to excess estrogen in the body, mostly developing among postmenopausal women<sup>(5,6)</sup>. Typical for type 1 EC is sequence of changes from normal endometrium, through hyperplasia, to precancerous lesion

(Figure 1). The transition from stage-to-stage is believed to be accompanied with accumulation of mutations in oncogenes, tumor suppressor genes DNA maintenance genes and their regulators<sup>(6)</sup>.

**Molecular characterization of endometrioid tumors**

One of the latest classifications is subtyping the endometrial tumors based on their molecular DNA background. Even though these molecular subgroups has not been implemented in clinical routine so far, studies confirm their prognostic relevance<sup>(7,8)</sup>.

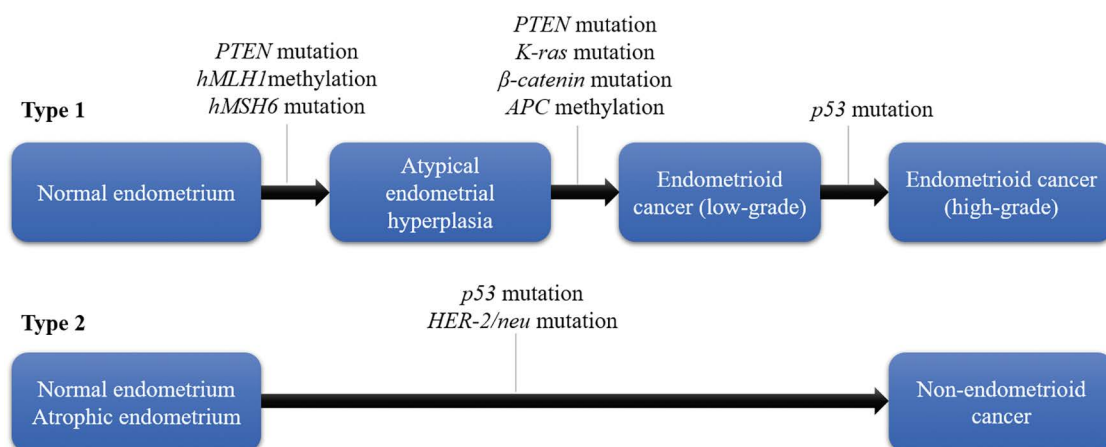
These four groups of carcinomas, independent on histological subtype, are POLE ultramutated (group 1), microsatellite instability (group 2), low-copy-number alterations (group 3), and high-copy-number alterations and TP53 mutations (group 4)<sup>(9,10)</sup>.

The POLE mutated EC is characterised by pathogenic variants in the DNA polymerase-epsilon (POLE) exonuclease domain mostly in one of the five hot-spots: P286R, V411L, S297F, A456P and S459F. This group presents itself at the younger age of patient and has excellent prognosis<sup>(7,10)</sup>. The second group is typically mismatch repair (MMR) deficient and the prognostic level is intermediate. The p53 mutant EC, in accordance with Type 2 classification, presents itself at late stage which correlates with its poor prognosis. The MMR-proficient, POLE and p53 wildtype group, often referred as NSMP EC (no specific molecular profile) has intermediate to excellent prognosis and is associated with higher body mass index<sup>(10)</sup>.

**The role of epigenetics - promotor methylation**

The regulation of EC stage-to-stage transition could be provided by activity of DNA methyltransferases, particularly *de novo* DNA methyltransferases. Their modification of CpG rich regions (often found in promoter regions, first exons or terminal parts of genes coding untranslated regions) has a crucial role for gene expression. Changed methylation of the *hMLH1* gene is considered one of the earliest steps in multi-stage endometrial carcinogenesis and is found in ~30 – 40% of cases<sup>(11,12)</sup>. This gene encodes the homolog of bacterial DNA mismatch repair protein and the malfunctional expres-

**Figure 1.** Stages of carcinogenesis in both endometrial cancer types<sup>(derived from (6) and modified)</sup>.



sion of the gene (caused by hypermethylation) is associated with other cancer kinds<sup>(13-15)</sup>. Kawaguchi *et al.*<sup>(16)</sup> reported that abnormalities in the mismatch repair genes (including *hMLH1*) leads to microsatellite instability which cascades into further mutations and increase in gene instability of other cancer related genes. Therefore, it has been recently proposed, in conformity with the recent group 1 – 4 subtyping, the MMR proteins and loss of *MLH1* should be tested for promoter hypermethylation to evaluate its epigenetic mechanism. Subsequent *POLE* and *p53* studies are also encouraged<sup>(6)</sup>.

There is also strong correlation between estrogen levels and expression of *hMLH1*. MMR activity was increased in high estrogen conditions for *in vitro* cultivated endometrial epithelial cells. High estrogen levels could therefore protect from EC development<sup>(12)</sup>. Cyclic production of estrogen and progesterone in menstruation cycle as well as decline of sex steroid hormone after menopause have direct effect on proliferation and morphology of endometrial tissue<sup>(3)</sup>. Methylation of the estrogen and progesterone receptor genes were therefore studied in EC cells. They both contain a CpG region in the first exon, but its methylation level have been variable in recent studies, thus its effect is not yet fully understood<sup>(3)</sup>.

During the atypical endometrial hyperplasia, the next stage of EC development, hypermethylation of *APC* promotor is likely to happen, since it is not methylated in normal endometrium, frequently hypermethylated in early cancer stages, but the methylation level is decreasing with an increase in the clinical stage<sup>(17)</sup>. E-cadherin is tumor suppressor encoded by *CDH1* gene, which promoter is also susceptible to hypermethylation. Decrease of its expression is not only sign of EC development but has an unfortunate 5-year clinical survival rate<sup>(18)</sup>. Most known affected gene in type 1 EC is *PTEN*. It functions as tumor suppressor gene, regulating proliferation and apoptosis. Its mutation occurs in 26 – 80% of EC, either at development of atypical endometrial hyperplasia or at low grade endometrioid cancer, quite possibly as a consequence of MMR dysfunction<sup>(3,6)</sup>. There is a possibility, that this gene may be downregulated by hypermethylation, as well<sup>(19)</sup>, although, its analysis of the methylation status is quite challenging, since it is 98% identical to *PTEN* pseudogene (*psiPTEN*)<sup>(20)</sup>. The other methylation affected genes in EC development are regulators of proliferation (*HOXA11*, *TGF-βRII*), apoptosis (*CASP8*), hormone metabolism (*COMT*) or other tumor suppressors (*RSK4*, *P73*, *RASSF1A*). For specifics about their involvement in EC, see<sup>(1)</sup>.

The type 2 EC have distinct methylation patterns. The promoters of many genes mentioned above (*hMLH1*, *APC*, *PTEN*, *RASSF1A*, progesterone receptor coding gene) are detected more frequently in type 1 tumors. Such findings indicates that the process of DNA methylation is predominant in type 1 EC and in type 2 it may have less significant role<sup>(3,21,22)</sup>.

### The role of epigenetics - microRNAs

Another way of epigenetic regulation in EC is via microRNA (miRNA) molecules. They may contribute via

RNA-associated silencing, but their genes are also under epigenetic regulation. miRNAs are short (19 – 25 nt), noncoding, single-stranded RNA molecules produced by RNA polymerase II or III usually cleaved from primary transcripts by RNase III<sup>(4,23)</sup>. Targeting of specific miRNA is not trivial since it is potentially able to regulate hundreds of genes and each transcript may be regulated by several miRNAs<sup>(24)</sup>.

The epigenetic regulation of miRNA is occurring on several levels since their production is also regulated by methylation level CpG-rich domains. Favier *et al.*<sup>(4)</sup> have recently published a complex review for miRNAs with increased (n=140), decreased (n=148) and miRNAs with discordant expression (n=22) in EC from over 100 articles. Additionally, the complex review reports about miRNAs with changed methylation level, six hypomethylated miRNAs and nine hypermethylated ones. Unsurprisingly, the majority of hypermethylated miRNAs (*miR-638*, *miR-137*, *miR-633*, *miR-34b*, *miR-124a-2*, *miR-124a-3*, *miR-152*, *miR-129-2*)<sup>(4,25-31)</sup> are tumor suppressors and the hypomethylated (*miR-182*, *miR-200b*, *miR-130a/b*, *miR-625*, *miR-222*, *miR-208a*)<sup>(4,29,32,33)</sup> are OncomiRs, the miRNAs associated with the cancer development. Particularly interesting are two miRNAs directly involved in DNA methylation of specific loci. *miR-30d* is responsible for methylation of CpG region in *H19 noncoding RNA* gene and *miR191* downregulates the *TET1* expression, the enzyme responsible for methylation removal in promoters of tumor suppressors (E.g., *APC*)<sup>(34,35)</sup>.

From vast list of miRNAs that are associated with EC and could serve as diagnostic markers, most known are *miR-182*, *miR-183*, *miR-200* and *miR-205*<sup>(4,36)</sup>. *miR-182* targets the *CUL5* protein, ubiquitin ligase, which has altered expression in several types of cancers. *CUL5* overexpression in EC model cell line resulted in decreased cell proliferation<sup>(32)</sup>. *CPEB1* mRNA is targeted, and its expression is downregulated by *miR-183*, which promotes cell proliferation, migration, invasion, and *in vivo* tumorigenesis in EC<sup>(37)</sup>. The *miR-200* family affects the *PI3K/AKT/mTOR* by downregulation of *PTEN*, tumor suppressor protein<sup>(4)</sup>. Since *miR-205* is overexpressed not only in EC<sup>(36)</sup>, but also in other types of cancer<sup>(38,39)</sup>, Favier *et al.*<sup>(4)</sup> do not find it suitable for diagnosis of EC but considers it as potential prognostic biomarker.

### Conclusion

Although, the high number of factors responsible for development of EC, either environmental, hormonal, genetic or epigenetic, we still need many pieces of complex mosaic, to finish the whole picture of this carcinogenic process. Such discoveries might serve as a useful prognostic and diagnostic tool. Because of high rate of EC in regions of Central and Easter Europe (see **Table 1**), we suggest investigating the methylation status Slovak endometrial cancer samples to compare found gene inactivation with known data. Thus, it might be possible to adjust diagnosis in our region.



**Acknowledgements**

This article was created with the support of the OP Integrated Infrastructure for the project: Center for biomedical research – BIOMEDIRES – II. phase, ITMS: 313011W428, co-financed by the European Regional Development Fund.

**Podakovanie**

Táto publikácia vznikla vďaka podpore v rámci Operačného programu Integrovaná infraštruktúra pre projekt: Centrum pre biomedicínsky výskum – BIOMEDIRES – II. etapa, kód ITMS: 313011W428, spolufinancovaný zo zdrojov Európskeho fondu regionálneho rozvoja.

**REFERENCES**

- Banno K, Kisu I, Yanokura M, Masuda K, Ueki A, Kobayashi Y, Susumu N, Aoki D. Epigenetics and genetics in endometrial cancer: new carcinogenic mechanisms and relationship with clinical practice. *Epigenomics*. 2012 Apr; 4(2): 147-62. doi: 10.2217/epi.12.13.
- Global Cancer Observatory, gco.iarc.fr, (28. September 2021).
- Tao MH, Freudenheim JL. DNA methylation in endometrial cancer. *Epigenetics*. 2010 Aug 16; 5(6): 491-8. doi: 10.4161/epi.5.6.12431. Epub 2010 Aug 16.
- Favier A, Rocher G, Larsen AK, Delangle R, Uzan C, Sabbah M, Caste-la M, Duval A, Mehats C, Canlorbe G. MicroRNA as Epigenetic Modifiers in Endometrial Cancer: A Systematic Review. *Cancers (Basel)*. 2021 Mar 6; 13(5): 1137. doi: 10.3390/cancers13051137.
- Cancer Research UK, cancerresearchuk.org/about-cancer/womb-cancer/types-grades, (26. September 2021).
- Banno K, Yanokura M, Iida M, Masuda K, Aoki D. Carcinogenic mechanisms of endometrial cancer: Involvement of genetics and epigenetics. *Journal of Obstetrics and Gynaecology Research*, 2014 Aug; 40(8): 1957-67. doi: 10.1111/jog.12442.
- Vermij L, Smit V, Nout R, Bosse T. Incorporation of molecular characteristics into endometrial cancer management. *Histopathology*. 2020 Jan; 76(1): 52-63. doi: 10.1111/his.14015.
- Goulder A, Gaillard SL. Molecular classification of endometrial cancer: entering an era of precision medicine. *Journal of Gynecologic Oncology*, 2022 May; 33(3): e47. doi: 10.3802/jgo.2022.33.e47.
- Cancer Genome Atlas Research Network, Kandoth C, Schultz N, Cherniack AD, Akbani R, Liu Y, Shen H, Robertson AG, Pashtan I, Shen R, Benz CC, Yau C, Laird PW, Ding L, Zhang W, Mills GB, Kucherlapati R, Mardis ER, Levine DA. Integrated genomic characterization of endometrial carcinoma. *Nature*. 2013 May 2; 497(7447): 67-73. doi: 10.1038/nature12113.
- Kim KR, Lax SF, Lazar AJ, Longacre TA, Malpica A, Matias-Guiu X, Nucci M, Oliva E. Tumours of the Uterine Corpus in WHO Classification of Female Genital Tumours, 5th ed.; International Agency for Research on Cancer: Lyon, France, 2020; Volume 4.
- Muraki Y, Banno K, Yanokura M, Kobayashi Y, Kawaguchi M, Nomura H, Hirasawa A, Susumu N, Aoki D. Epigenetic DNA hypermethylation: clinical applications in endometrial cancer (Review). *Oncol Rep*. 2009 Nov; 22(5): 967-72. doi: 10.3892/or\_00000523.
- Miyamoto T, Shiozawa T, Kashima H, Feng YZ, Suzuki A, Kurai M, Nikaido T, Konishi I. Estrogen up-regulates mismatch repair activity in normal and malignant endometrial glandular cells. *Endocrinology*. 2006 Oct; 147(10): 4863-70. doi: 10.1210/en.2006-0632. Epub 2006 Jul 6.
- Endoh Y, Tamura G, Ajioka Y, Watanabe H, Motoyama T. Frequent hypermethylation of the hMLH1 gene promoter in differentiated-type tumors of the stomach with the gastric foveolar phenotype. *Am J Pathol*. 2000 Sep; 157(3): 717-22. doi: 10.1016/S0002-9440(10)64584-1.
- Truninger K, Menigatti M, Luz J, Russell A, Haider R, Gebbers JO, Bannwart F, Yurtsever H, Neuweiler J, Riehle HM, Cattaruzza MS, Heinemann K, Schär P, Jiricny J, Marra G. Immunohistochemical analysis reveals high frequency of PMS2 defects in colorectal cancer. *Gastroenterology*. 2005 May; 128(5): 1160-71. doi: 10.1053/j.gastro.2005.01.056.
- Chang Z, Zhang W, Chang Z, Song M, Qin Y, Chang F, Guo H, Wei Q. Expression characteristics of FHIT, p53, BRCA2 and MLH1 in families with a history of oesophageal cancer in a region with a high incidence of oesophageal cancer. *Oncol Lett*. 2015 Jan; 9(1): 430-436. doi: 10.3892/ol.2014.2682. Epub 2014 Nov 7.
- Kawaguchi M, Banno K, Yanokura M, Kobayashi Y, Kishimi A, Ogawa S, Kisu I, Nomura H, Hirasawa A, Susumu N, Aoki D. Analysis of candidate target genes for mononucleotide repeat mutation in microsatellite instability-high (MSI-H) endometrial cancer. *Int J Oncol*. 2009 Nov; 35(5): 977-82. doi: 10.3892/ijo\_00000411.
- Ignatov A, Bischoff J, Ignatov T, Schwarzenau C, Krebs T, Kuester D, Costa SD, Roessner A, Semczuk A, Schneider-Stock R. APC promoter hypermethylation is an early event in endometrial tumorigenesis. *Cancer Sci*. 2010 Feb; 101(2): 321-7. doi: 10.1111/j.1349-7006.2009.01397.x. Epub 2009 Oct 12.
- Yi TZ, Guo J, Zhou L, Chen X, Mi RR, Qu QX, Zheng JH, Zhai L. Prognostic value of E-cadherin expression and CDH1 promoter methylation in patients with endometrial carcinoma. *Cancer Invest*. 2011 Jan; 29(1): 86-92. doi: 10.3109/07357907.2010.512603. Epub 2010 Sep 27.
- Salvesen HB, Stefansson I, Kretzschmar EI, Gruber P, MacDonald ND, Ryan A, Jacobs IJ, Akslen LA, Das S. Significance of PTEN alterations in endometrial carcinoma: a population-based study of mutations, promoter methylation and PTEN protein expression. *Int J Oncol*. 2004 Dec; 25(6): 1615-23.
- Zysman MA, Chapman WB, Bapat B. Considerations when analyzing the methylation status of PTEN tumor suppressor gene. *Am J Pathol*. 2002 Mar; 160(3): 795-800. doi: 10.1016/S0002-9440(10)64902-4. Erratum in: *Am J Pathol* 2002 Jun; 160(6): 2311.
- Risinger JI, Maxwell GL, Berchuck A, Barrett JC. Promoter hypermethylation as an epigenetic component in Type I and Type II endometrial cancers. *Ann N Y Acad Sci*. 2003 Mar; 983: 208-12. doi: 10.1111/j.1749-6632.2003.tb05975.x.
- Liao X, Siu MK, Chan KY, Wong ES, Ngan HY, Chan QK, Li AS, Khoo US, Cheung AN. Hypermethylation of RAS effector related genes and DNA methyltransferase 1 expression in endometrial carcinogenesis. *Int J Cancer*. 2008 Jul 15; 123(2): 296-302. doi: 10.1002/ijc.23494.
- Berindan-Neagoe I, Monroig Pdel C, Pasculli B, Calin GA. MicroRNAome genome: a treasure for cancer diagnosis and therapy. *CA Cancer J Clin*. 2014 Sep-Oct; 64(5): 311-36. doi: 10.3322/caac.21244. Epub 2014 Aug 7.
- Betel D, Wilson M, Gabow A, Marks DS, Sander C. The microRNA.org resource: targets and expression. *Nucleic Acids Res*. 2008 Jan; 36(Database issue): D149-53. doi: 10.1093/nar/gkm995. Epub 2007 Dec 23.
- Ni J, Liang S, Shan B, Tian W, Wang H, Ren Y. Methylation-associated silencing of miR-638 promotes endometrial carcinoma progression by targeting MEF2C. *Int J Mol Med*. 2020 Jun; 45(6): 1753-1770. doi: 10.3892/ijmm.2020.4540. Epub 2020 Mar 16.
- Zhang W, Chen JH, Shan T, Aguilera-Barrantes I, Wang LS, Huang TH, Rader JS, Sheng X, Huang YW. miR-137 is a tumor suppressor in endometrial cancer and is repressed by DNA hypermethylation. *Lab Invest*. 2018 Nov; 98(11): 1397-1407. doi: 10.1038/s41374-018-0092-x. Epub 2018 Jun 28.
- Yanokura M, Banno K, Adachi M, Aoki D, Abe K. Genome-wide DNA methylation sequencing reveals miR-663a is a novel epimutation candidate in CIMP-high endometrial cancer. *Int J Oncol*. 2017 Jun; 50(6): 1934-1946. doi: 10.3892/ijo.2017.3966. Epub 2017 Apr 19.
- Hiroki E, Suzuki F, Akahira J, Nagase S, Ito K, Sugawara J, Miki Y, Suzuki T, Sasano H, Yaegashi N. MicroRNA-34 b functions as a potential tumor suppressor in endometrial serous adenocarcinoma. *Int J Cancer*. 2012 Aug 15; 131(4): E395-404. doi: 10.1002/ijc.27345. Epub 2012 Feb 28.
- Pavicic W, Perkiö E, Kaur S, Peltomäki P. Altered methylation at microRNA-associated CpG islands in hereditary and sporadic carcinomas: a methylation-specific multiplex ligation-dependent probe amplification (MS-MLPA)-based approach. *Mol Med*. 2011; 17(7-8): 726-35. doi: 10.2119/molmed.2010.00239. Epub 2011 Feb 9.
- Tsuruta T, Kozaki K, Uesugi A, Furuta M, Hirasawa A, Imoto I, Susumu N, Aoki D, Inazawa J. miR-152 is a tumor suppressor microRNA that is silenced by DNA hypermethylation in endometrial cancer. *Cancer Res*. 2011 Oct 15; 71(20): 6450-62. doi: 10.1158/0008-5472.CAN-11-0364. Epub 2011 Aug 25.

- 31.** Huang YW, Liu JC, Deatherage DE, Luo J, Mutch DG, Goodfellow PJ, Miller DS, Huang TH. Epigenetic repression of microRNA-129-2 leads to overexpression of SOX4 oncogene in endometrial cancer. *Cancer Res.* 2009 Dec 1; 69(23): 9038-46. doi: 10.1158/0008-5472.CAN-09-1499. Epub 2009 Nov 3.
- 32.** Devor EJ, Schickling BM, Reyes HD, Warriar A, Lindsay B, Goodheart MJ, Santillan DA, Leslie KK. Cullin-5, a ubiquitin ligase scaffold protein, is significantly underexpressed in endometrial adenocarcinomas and is a target of miR-182. *Oncol Rep.* 2016 Apr; 35(4): 2461-5. doi: 10.3892/or.2016.4605. Epub 2016 Feb 1.
- 33.** Li BL, Lu W, Lu C, Qu JJ, Yang TT, Yan Q, Wan XP. CpG island hypermethylation-associated silencing of microRNAs promotes human endometrial cancer. *Cancer Cell Int.* 2013 May 16; 13(1): 44. doi: 10.1186/1475-2867-13-44.
- 34.** Moreno-Moya JM, Vilella F, Martínez S, Pellicer A, Simón C. The transcriptomic and proteomic effects of ectopic overexpression of miR-30d in human endometrial epithelial cells. *Mol Hum Reprod.* 2014 Jun; 20(6): 550-66. doi: 10.1093/molehr/gau010. Epub 2014 Jan 30.
- 35.** Yang C, Ota-Kurogi N, Ikeda K, Okumura T, Horie-Inoue K, Takeda S, Inoue S. MicroRNA-191 regulates endometrial cancer cell growth via TET1-mediated epigenetic modulation of APC. *J Biochem.* 2020 Jul 1; 168(1): 7-14. doi: 10.1093/jb/mvaa014.
- 36.** Donkers H, Bekkers R, Galaal K. Diagnostic value of microRNA panel in endometrial cancer: A systematic review. *Oncotarget.* 2020 May 26; 11(21): 2010-2023. doi: 10.18632/oncotarget.27601.
- 37.** Xiong H, Chen R, Liu S, Lin Q, Chen H, Jiang Q. MicroRNA-183 induces epithelial-mesenchymal transition and promotes endometrial cancer cell migration and invasion in by targeting CPEB1. *J Cell Biochem.* 2018 Nov; 119(10): 8123-8137. doi: 10.1002/jcb.26763. Epub 2018 Jun 20.
- 38.** Li JH, Sun SS, Li N, Lv P, Xie SY, Wang PY. MiR-205 as a promising biomarker in the diagnosis and prognosis of lung cancer. *Oncotarget.* 2017 Aug 14; 8(54): 91938-91949. doi: 10.18632/oncotarget.20262.
- 39.** Chauhan N, Dhasmana A, Jaggi M, Chauhan SC, Yallapu MM. miR-205: A Potential Biomedicine for Cancer Therapy. *Cells.* 2020 Aug 25; 9(9): 1957. doi: 10.3390/cells9091957.

**Mgr. Dominik Kodada**

Ústav lekárskej biológie, genetiky a klinickej genetiky LFUK

Sasinkova 4, 811 08 Bratislava

e-mail: dominikkodada@gmail.com